

	.....	1
1.1	.....	4
1.2	.....	4
1.2.1	.....	4
1.2.2	.....	5
1.2.3	.....	5
1.3	.....	5
1.4	.....	6
1.5	.....	7
1.5.1	.....	7
1.5.2	.....	7
	.....	8
2.1	.....	8
2.1.1	.....	8
2.1.2	.....	8
2.1.3	.....	8
2.1.4	.....	8
2.1.5	.....	9
2.1.6	.....	9
2.1.7	.....	9
2.1.8	.....	9
2.1.9	.....	9
2.1.10	.....	9
2.1.11	.....	9
2.2	.....	10
2.2.1	.....	10
2.2.2	.....	10
2.2.3	PT        CT .....	10
2.2.4	.....	10
2.2.5	.....	10
2.2.6 CT	.....	10
2.2.7 PT	.....	11
2.2.8	.....	11
2.2.9	.....	11
2.3	.....	11
	.....	13
3.1	.....	13
3.2	.....	13
3.2.1	.....	15
3.2.2	.....	15
3.2.3	.....	15
3.2.4	.....	15

3.2.5	.....	15
3.2.6	.....	15
	.....	16
4.1	.....	16
4.1.1	.....	16
4.1.2	.....	16
4.1.3	.....	16
4.2 MS SQL SERVER 2008	.....	16
4.3	.....	17
4.4	.....	37
	.....	40
5.1	.....	40
5.1.1	.....	40
5.1.2	.....	40
5.2	.....	43
5.2.1	.....	43
5.2.2	.....	44
5.3	.....	46
5.4	.....	50
5.4.1	.....	50
5.4.2	.....	52
5.4.3	.....	53
5.4.4	.....	54
5.4.5	.....	57
5.5 IC	.....	59
5.5.1	.....	59
5.5.2	.....	60
5.5.3	.....	61
5.5.4	.....	62
5.6	.....	63
5.6.1	.....	63
5.6.2	.....	65
5.6.3	.....	66
5.6.4	.....	67
5.6.5	.....	68
5.6.6	.....	69
5.6.7	.....	70
5.6.8	.....	71
5.6.9	.....	72
5.7	.....	73
5.7.1	.....	73
5.7.2	.....	74
	.....	75
6.1	.....	75

6.2	.....	75
6.3	.....	75
6.4	.....	75
6.5	.....	76
6.6	.....	76
6.7	.....	76
6.8	.....	76

## 1.1

DDSY1352

IC

Microsoft

Microsoft Visual Studio

SQL Server2008

IC

IC

IC

DES

IC

IC

IC

IC

IC

,

## 1.2

### 1.2.1

64

,

1.2.2

1.2.3

1.3

(1)

IC

IC

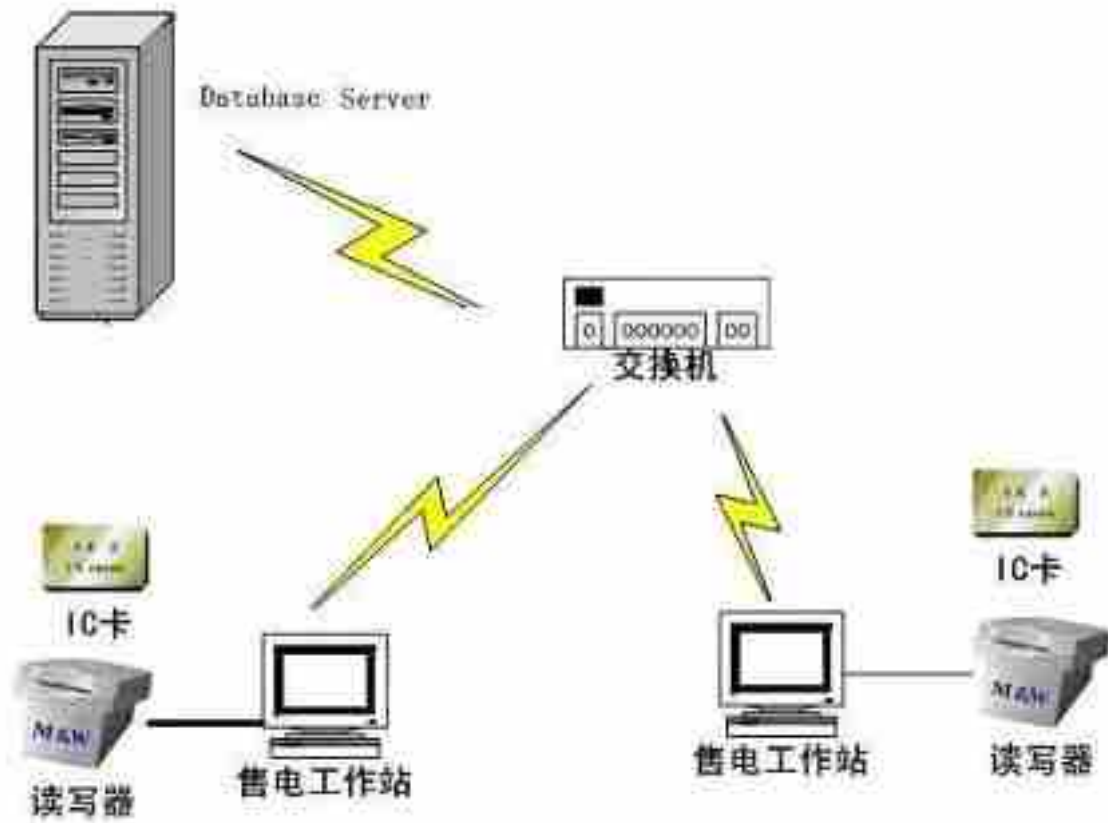
(2)

IC

(3)

(4)

1.4



( 1.1)

IP

DDSY1352

SI e4442 IC

( )

IP

## 1.5

### 1.5.1

(1) 2.8G , 2G , 120GB

(2) 2.8G , 2G , 500GB

(3) IC (SRD-U100) SLE 4442 IC  
DDSY1352 IC

(4) LQ1600K ( )

(5) 1024\*768

### 1.5.2

(1) windows 7/2003, windows2000/windows XP  
windows XP;

(2) Windows 2003 Server

(3) Microsoft SQL SERVER 2008 R2

(4) 1024\*768

2.1

2.1.1

DDSY1352

2.1.2

kWh

2.1.3

—

kWh

IC

IC

IC

IC

2.1.4



2.1.5

IC

2.1.6

2.1.7

2.1.8

2.1.9

2.1.10

2.1.11

## 2.2

### 2.2.1

1 (r/kWh) (imp/kWh) 1600 imp/kWh

### 2.2.2

20/5=4 4 5(20)A =5A  
220V 10(40)A 50Hz 1600imp/kWh  
=220V =10A =4 =1600

### 2.2.3

PT CT

### 2.2.4

= \*  
30 10  
=30\*10=300  
=1 =1 =1\*1=1

### 2.2.5

00000 000000

### 2.2.6 CT

CT

2.2.7 PT

PT

VA VA

100V

2.2.8

CT\*PT

0.5 /kWh CT=100/10 PT=1/1 10

CT\*PT=10

0.5\*10=5

2.2.9

CT\*PT

100 10 CT\*PT=10 =100/10=10

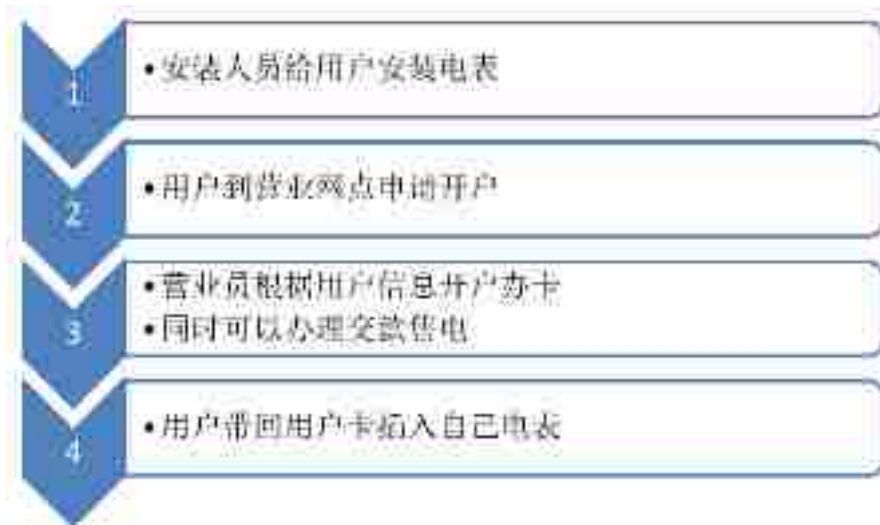
0.5

2.3

	1.		
	2.		
	3.		
	4.		
	5.		
	6.		
	7.		
	8.		
	9.		
	10.		
	11.		
	12.		
	13.		
	14.		
	15.		1
	16.		
IC	17.		IC
	18.		IC
	19.		
	20.		IC
	21.		
	22.		IC
	23.		
	24.		
	25.		
	26.		
	27.		
	28.		
	29.		
	30.		
	31.		IC
	32.		
	33.		
	34.		
	35.		

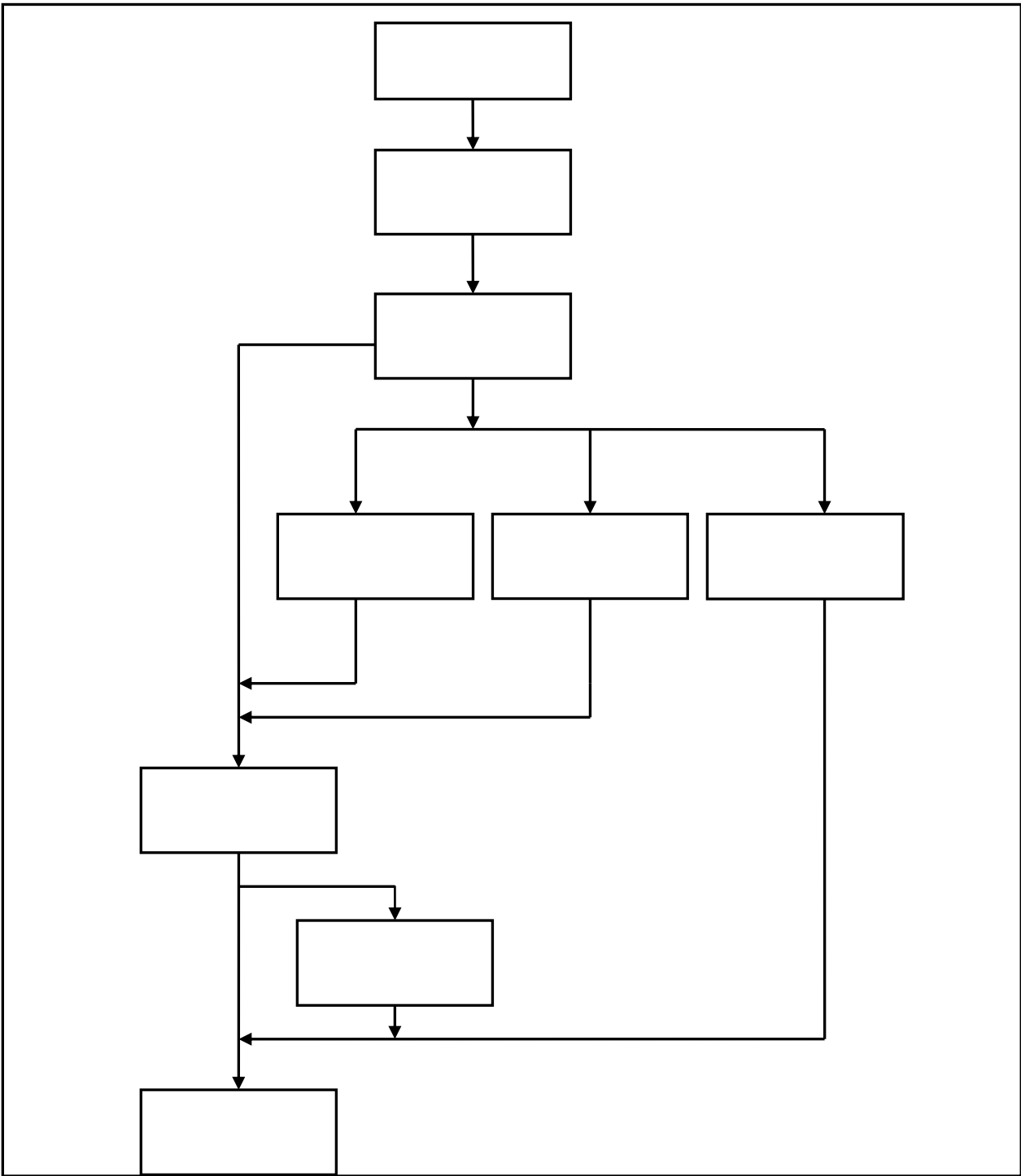
( 2.3)

### 3.1

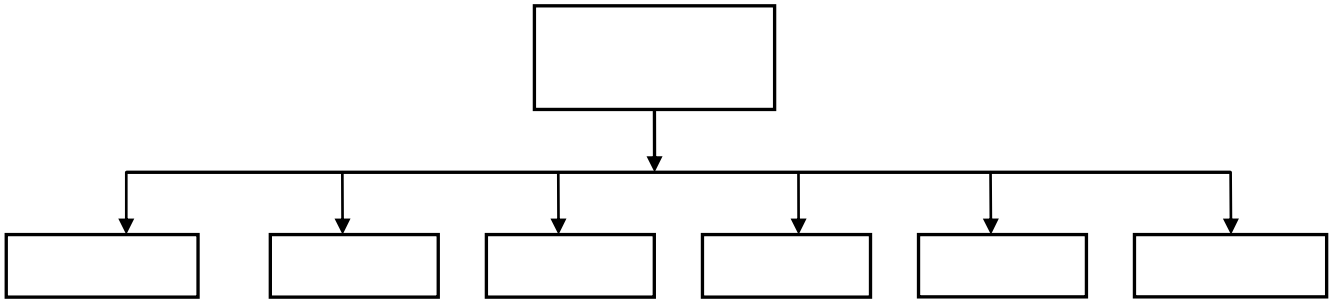


( 3.1)

### 3.2



( 3.2)



( 3.2-(1))

3.2.1

3.2.2

3.2.3

3.2.4

3.2.5

3.2.6

## 4.1

### 4.1.1

1. SQL Server2008
  2. (
- ) setup.exe

### 4.1.2

1. (
- ) setup.exe
2. " "

### 4.1.3

1. pdf " "

## 4.2 MS SQL SERVER 2008

MS SQL SERVER 2008

MS SQL SERVER 2008

1 Microsoft .NET Framework 3.5 sp1

2 —

3

4

5

6

7 Analysis Services, Reporting Services

8 ( )



9 ( )

10 NTFS 5G

11 NT AUTHORITY\SYSTEM

12 0.0

13

14

15 " "

### 4.3

SQL Server 2008 R2 " SQL Server

"

SQL Server

1 " " 4.3.1

2 1 "



4.3.1

1

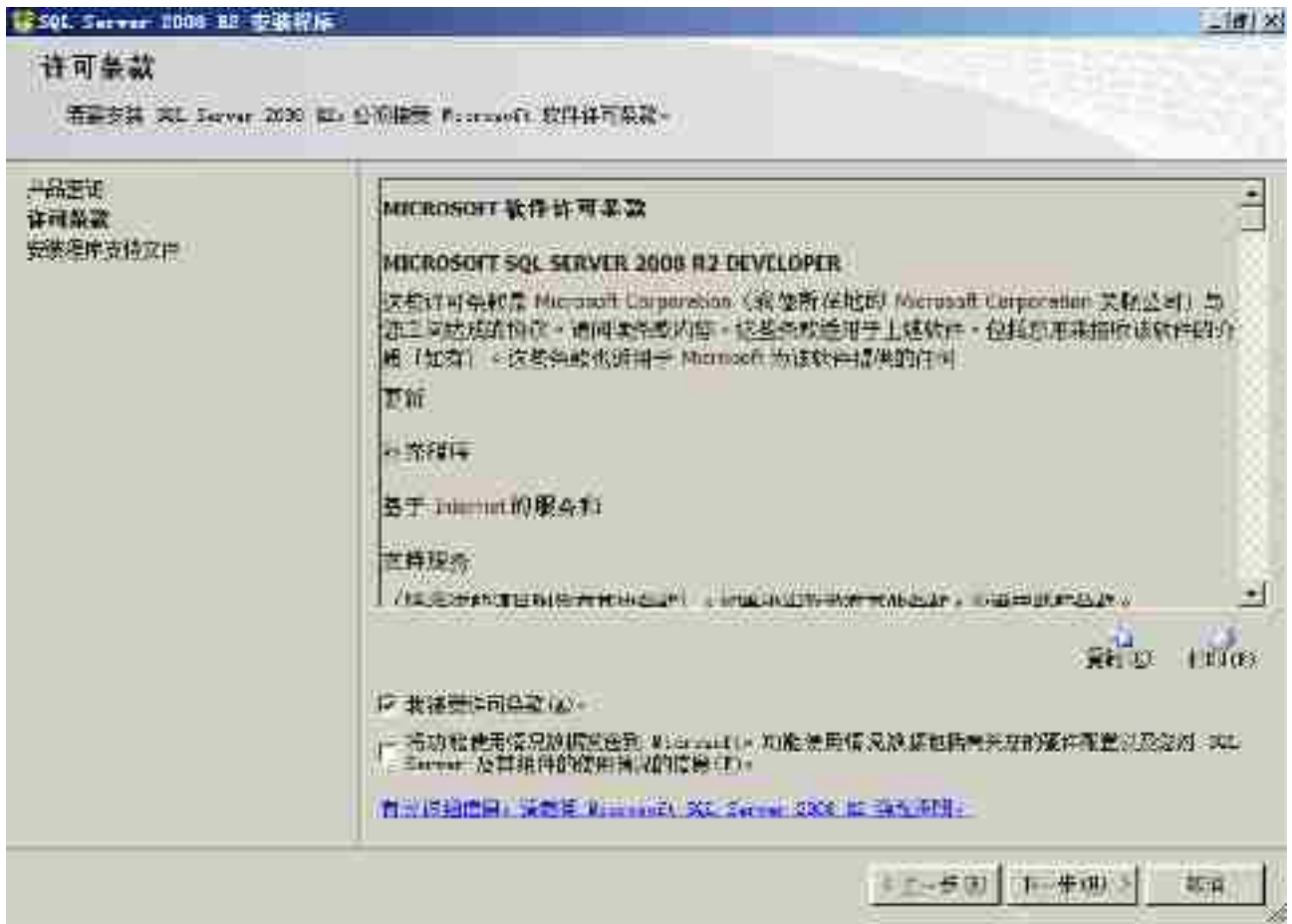


#### 4.3.2.1 .



#### 4.3.2.2 .

3



#### 4.3.2.3 .

4



4.3.2.4 .

SQL Server

1



#### 4.3.3.1 .

" Windows "

Windows2008

SQL Server

TCP1433

2

3

" SQL Server "



4.3.3.2 .

3

“ ” “ ” “ ” “ ”

“ ” “ ” “ ” “ ” “ ” “ ”

“ ” Analysis Servi ces “ ” Reporti ng Servi ces “ ”

Analysis Servi ces Reporti ng Servi ces



#### 4.3.3.3 .

4





#### 4.3.3.4 .

5

MSSQLSERVER



4.3.3.5 .

6

SQL Server

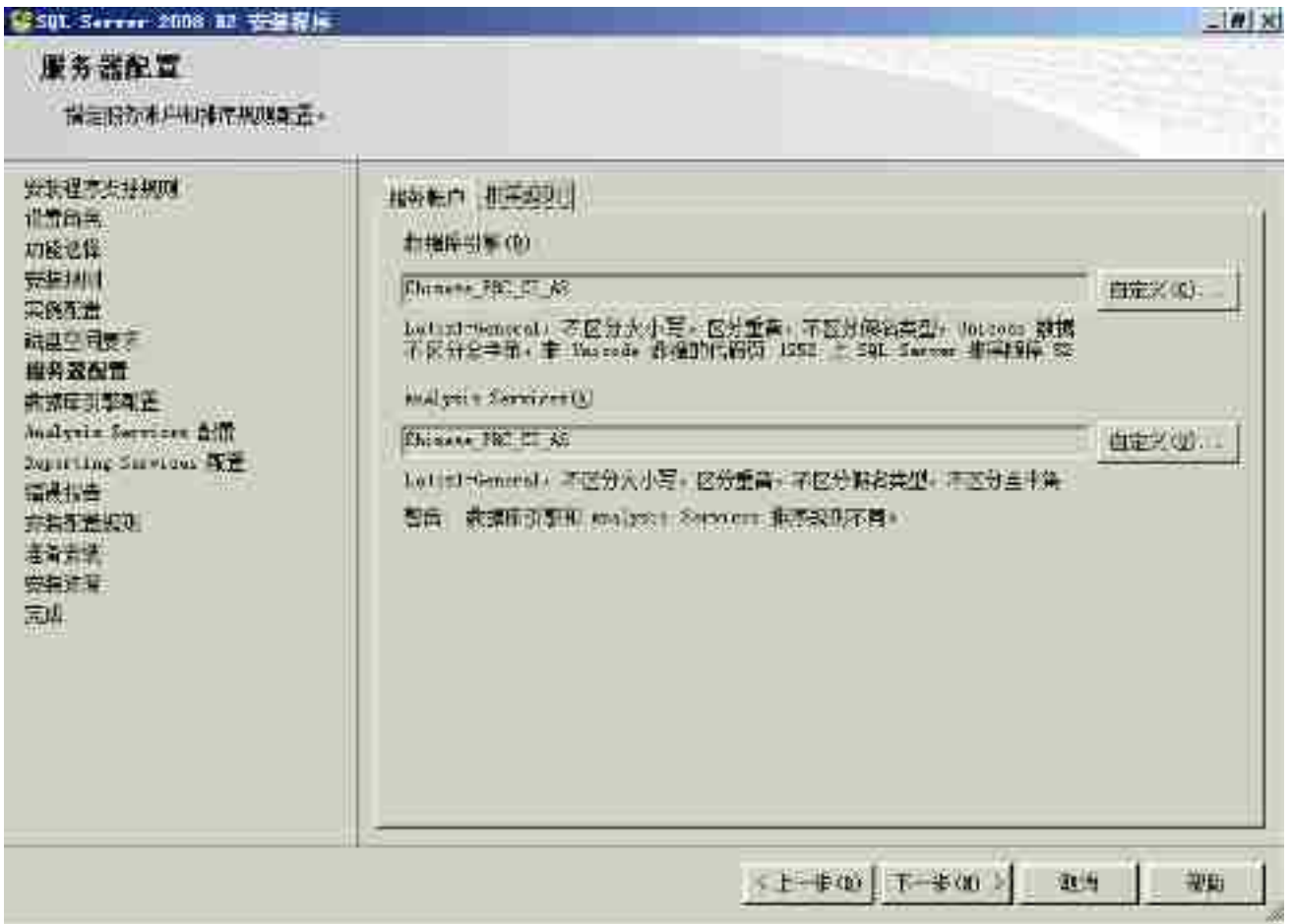
4516MB



4.3.3.6 .



4.3.3.7-1 .



4.3.3.7-2 .

8

3



4.3.3.8 .

0.0,

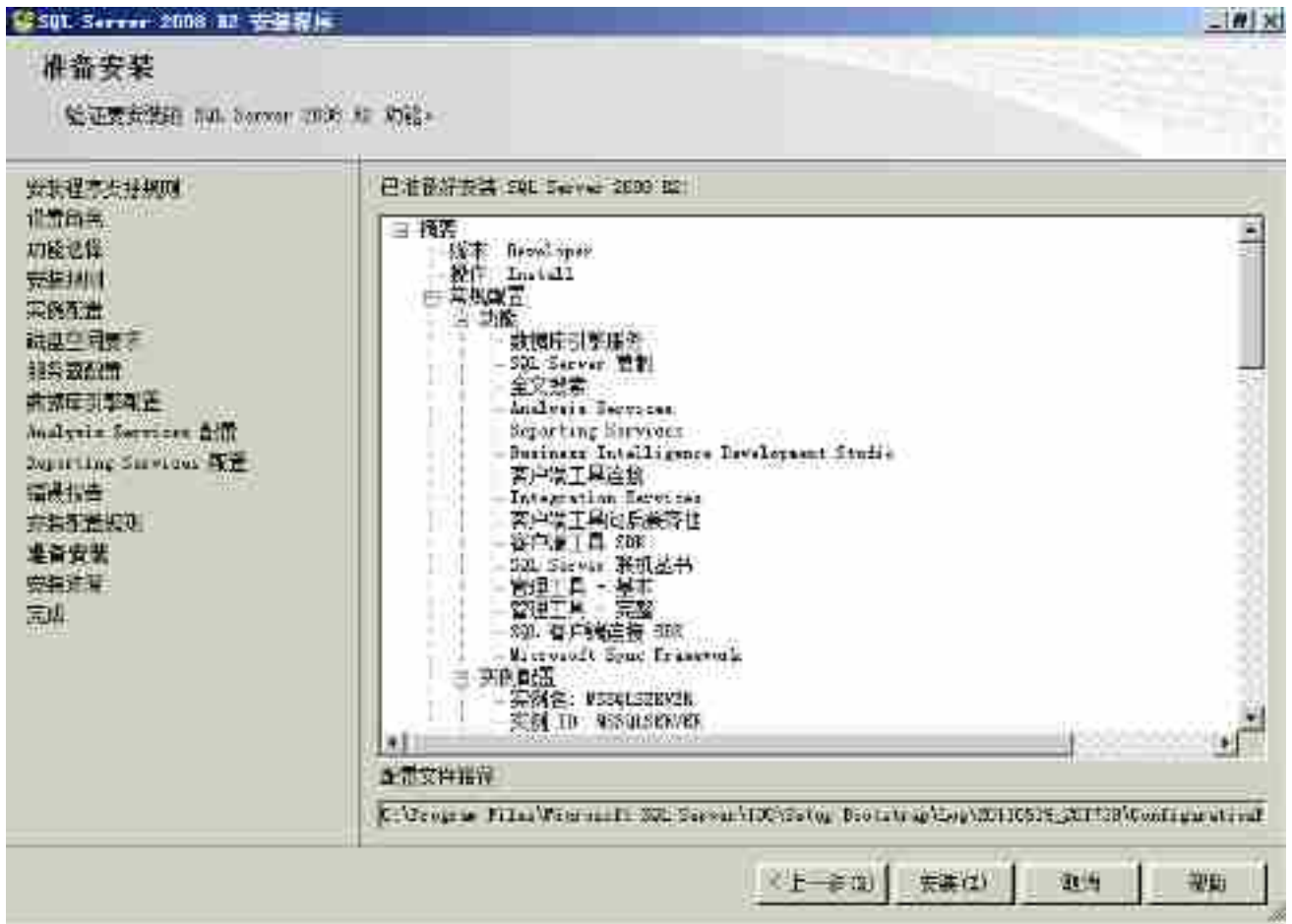


4.3.3.9 .



4.3.3.10 .





#### 4.3.4.1 .

“ ”



4.3.4.2 .

4.3.4.3 .



#### 4.3.4.3 .

SQL SERVER 2008

C:\Program Files\Microsoft SQL Server\MSSQL10\_50.MSSQLSERVER\MSSQL\DATA

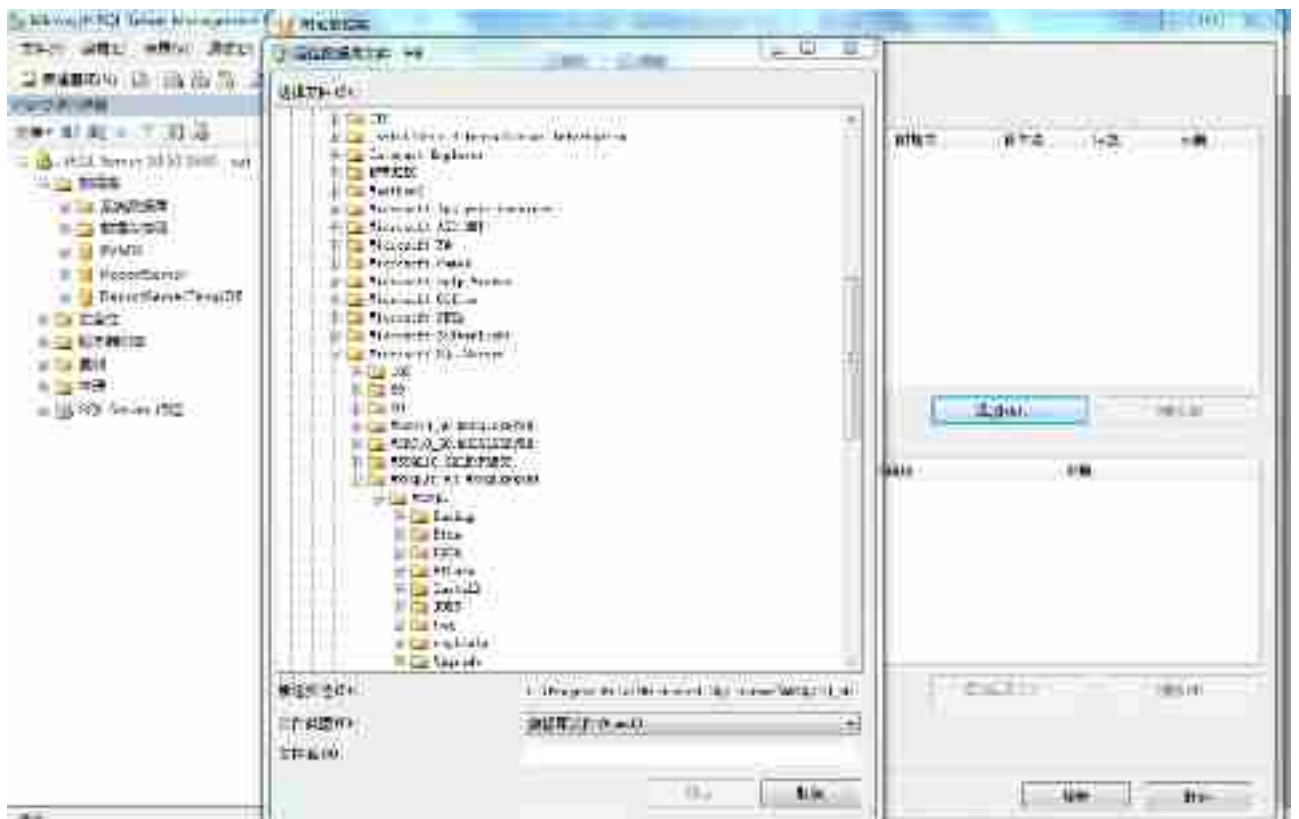
— -- Microsoft

SQL Server 2008 R2-- SQL Server Management Studio

5.1.1



4.3.5.1 .



4.3.5.2

## 4.4

### 4.4.1



### 4.4.1

C:\Program Files\



4.4.2



4.4.2



4.4.3

5.1

5.1.1

" "

1)

" "

admin

admin8

2)

" "

5.1.1



5.1.1

5.1.2

(

)

5.1.2.1





5.1.2.1

SQL

- 1) IP SQL SERVER 2008  
SQL SERVER
- 2) , " ." IP  
"sa" SQL SERVER
- 3) "sa"
- 4) 0.0  
SQLSERVER

SQL

5.1.2.2



5.1.2.2



5.1.2.3

SQL SERVER

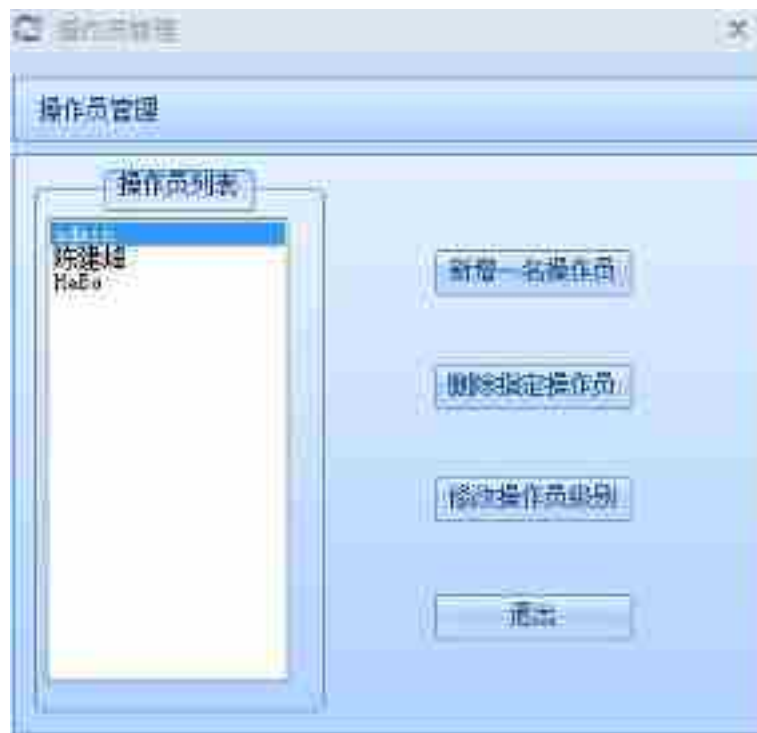
5.1.2.4



5.1.2.4

## 5.2

### .5.2.1



5.2.1

5.2.2.

“ ”

新增一名操作员：

姓名

密码

状态  是否激活

级别

5.2.2

5.2.3

7

操作员登陆密码

操作员密码修改

当前操作员:

输入旧密码:

输入新密码:

确认新密码:

5.2.3

## 5.3

“ ”

“ ”

1



5.3

### 5.3.1

“ ” - “ ” ,

5.3.1

“ ”

5.3.1.2

5.3.1.3

IC



5.3.1



5.3.1.2



5.3.1.3

### 5.3.2

" " - " " , 5



5.3.2

### 5.3.3

" " - " " "

4





5.3.3

5.3.4

" " \_ " " " "



5.3.4

## 5.4

### 5.4.1

" " - " "

5.4.1

1

DDSY1352

Acrel

2

12

3

4

8

\*

>=

9

5.4.1.1

10

5.4.1.2

9999

" " \_ " "

0

5.4.1.1



5.4.1.2

5.4.2

" " - "

" " -

" "

1

2 " "

修改客户数据

**客户信息**

客户编号: 100000000009      客户姓名: 何晓娟

客户电话: 18017288720      客户地址: 上海市嘉定区马陆中学

客户邮编: 111      客户电费: 1:2000

**电表信息**

电表类型: 380V130A单相电子式预付费电能表

电表编号: 120450704445      报警电量: 20 kWh

负载电量: 10      囤积电量: 3000 kWh

电表欠费: 3

**欠费信息**

上次购电用量: 11 kWh

确认      退出

5.4.2

5.4.3

" " - " " 5.4.3

,

:

,

:

1 ,

) (

2 " " " "

" "

3

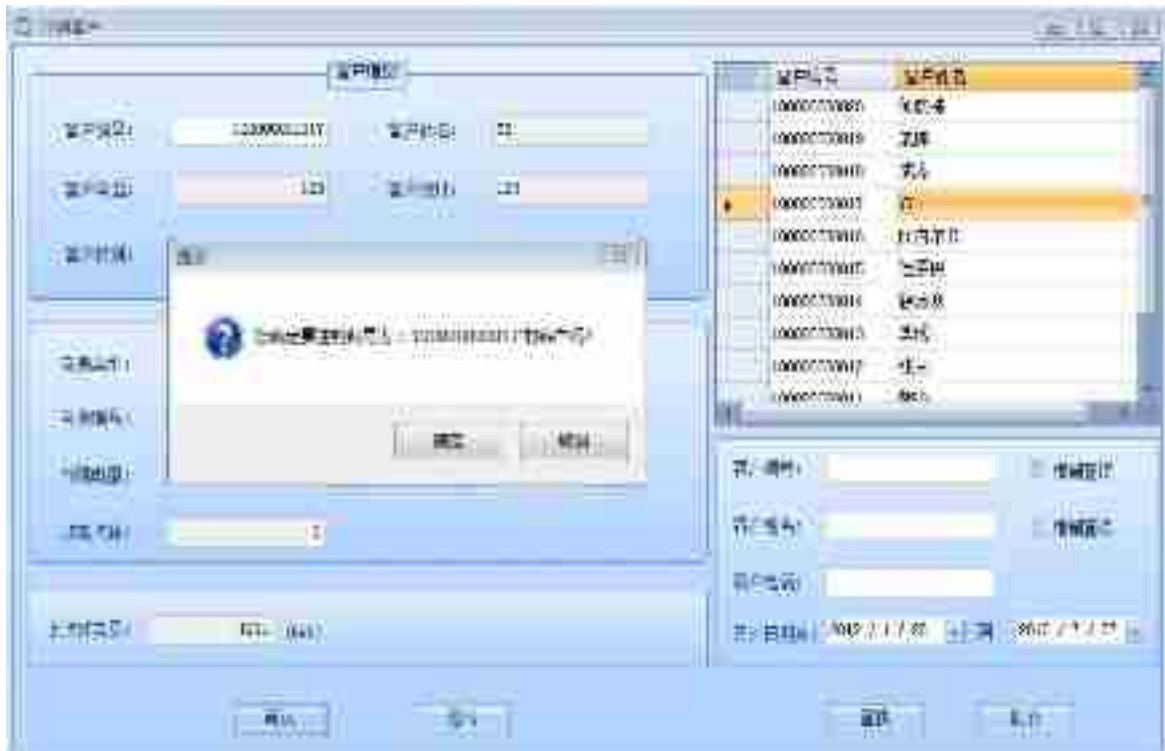
“ ” “ ” “ ” “ ” “ ” “ ”



5.4.3

### 5.4.4

“ ” “ ” “ ” “ ” “ ” “ ” “ ” “ ”



5.4.4.1

- 1
- 2
- 3
- 4

" "

" " " "

"



5.4.4.2

1

2 5.4.4.2

3

4

:

1

2

"

"

"

"





5.4.4.3



5.4.4.4

5.4.5

" " " " 5.4.5

" "

" "

1

" "

2

3

1

4

客户换表补电

客户信息

客户编号: 100000000007      客户姓名: hebo

客户电话: 13019      客户地址: 13103

客户区域: 实验小学      客户电价: 1.0000

电表信息

电表类型: MGF11352单相电子式预付费电能表

电表编号: 201301016001      报容容量: 20 kVA

限制容量: 10      累积容量: 9999 kWh

购电次数: 2

进补写卡电量: 225 kWh

上次购电时间: 2012/1/17 9:57:07

确认      退出

5.4.5

## 5.5 IC

### 5.5.1

" IC " - " "

IC " "

Ctrl + B " " " "

IC

" IC 1 "

" " - "

The screenshot shows a software window titled 'IC管理' (IC Management) with a '电量超限额' (Power Exceeds Limit) warning. The interface is divided into several sections:

- Customer Information:** Includes fields for '客户编号' (Customer ID), '客户姓名' (Customer Name), '客户电话' (Customer Phone), '客户地址' (Customer Address), '客户邮编' (Customer Zip Code), and '客户电话' (Customer Phone).
- Product/Device Information:** Includes '设备名称' (Device Name), '设备编号' (Device ID), '设备电压' (Device Voltage), '设备容量' (Device Capacity), '设备厂家' (Device Manufacturer), and '设备品牌' (Device Brand).
- Usage/Status Information:** Includes '设备容量' (Device Capacity), '设备电压' (Device Voltage), '设备容量' (Device Capacity), '设备电压' (Device Voltage), '设备容量' (Device Capacity), and '设备电压' (Device Voltage).
- Warning:** A red warning box displays '电量无效' (Power Invalid).
- Buttons:** '确定' (Confirm) and '取消' (Cancel) buttons are located at the bottom.

5.5.1

“ IC ” - “ ”  
IC

IC IC

## 5.5.2

“ IC ” - “ ”  
“ ”  
2



5.5.2.1

新电卡

**客户信息**

客户编号: 100000000005      客户姓名: 11

客户电话: 11      客户地址: 11

客户区域: 与陆架位      客户电价: 0.0000

**电表信息**

电表类型: 00511383加密单相卡表

电表编号: 000000010000      标称电量: 20 kWh

初始电量: 10      囤积电量: 1000 kWh

写卡次数: 2

**购电信息**

**本次余额: 0元**

写卡电量: 51 kWh      购电金额: 102 元

实际电量: 41 kWh      剩余额: 0 元

确认      退出

5.5.2.2

5.5.3

" IC " - " "

"

"

" "

改写IC卡电表

**客户信息**

客户编号: 100000000005      客户姓名: 11

客户电话: 11      客户地址: 11

客户区域: 马桂强校      客户电话: 2-0000

**电表信息**

电表类型: 单相电表

电表编号: 000000010000      标称电量: 20 kWh

预置电量: 10      囤积电量: 1000 kWh

写卡次数: 2

**取电信息**

**本次余额:**

写卡电量: 0 kWh      应收金额: 0.00 元

写电电量: 0 kWh      实收金额: 元

确认      退出

5.5.3

5.5.4

" IC " - " " " 1

1

IC

2



5.5.4

5.6

5.6.1

" " " " " "



5.6.1.1

" " " "

1

2

1

1

3

4

5

( )





5.6.1.2

## 5.6.2

" " \_ " " 1

1

2



### 5.6.2

### 5.6.3

" " - "

1

2



5.6.3

5.6.4

" " " " " "

5.6.4

1

2

3  
4

1

" "



5.6.4

### 5.6.5

" " " " " "

1

1

2

3



5.6.5

5.6.6

" " - " " 1

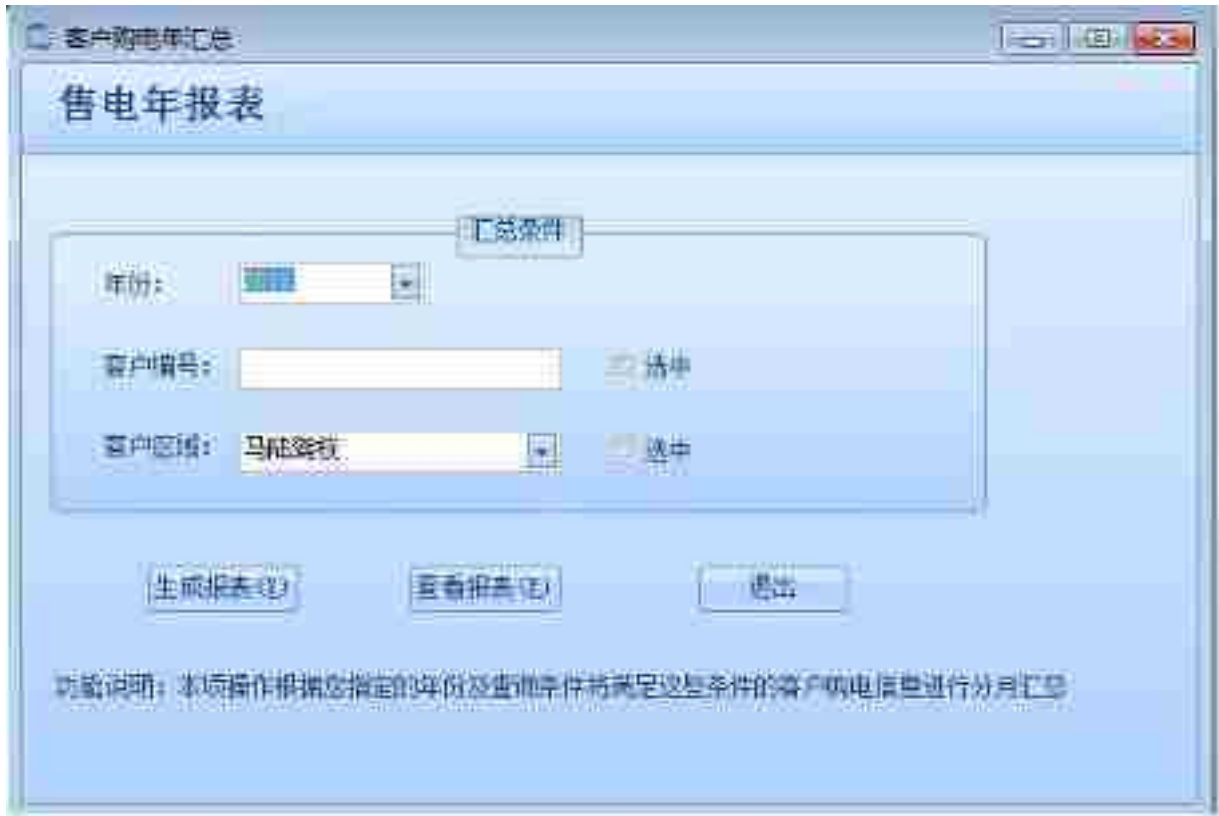
1

2

" "

3

" " 2



5.6.6

### 5.6.7

" " - " "

5.6.7

1

2

" "

“ ” ” ” ” ” ” ”

插卡返回信息查询 功能说明：本模块主要用于查询客户使用购电卡后电表返回的电表内当前数据。

客户编号	客户姓名	电表编号	电表电量	总用电量	当前电量	插卡次数
225	10000000028	0000000000	293	0	293	2
225	10000000028	0000000000	212	0	212	1
224	10000000007	0000000000	180	0	180	0
225	11111111111	0000000000	111	0	111	1
228	10000000007	0000000000	370	0	370	0
221	10000000007	0000000000	370	0	370	0
226	10000000007	0000000000	370	0	370	1
216	10000000007	0000000000	800	0	800	0
218	11111111111	0000000000	111	0	111	1
217	10000000005	0000000000	141	0	141	0
216	10000000005	0000000000	90	0	90	1

说明：系统默认连接时间为上午9时00分至今日23时59分所有插卡返回信息，共有11条。

客户编号： 模糊查询 共有11条记录 2012-11-12 到 2012-11-12

5.6.7

5.6.8

“ ” “ ” “ ” “ ” 5.6.8

“ \_\_\_\_\_ ”

1

2

“ ”



5.6.8

5.6.9

" " " "

5.6.9

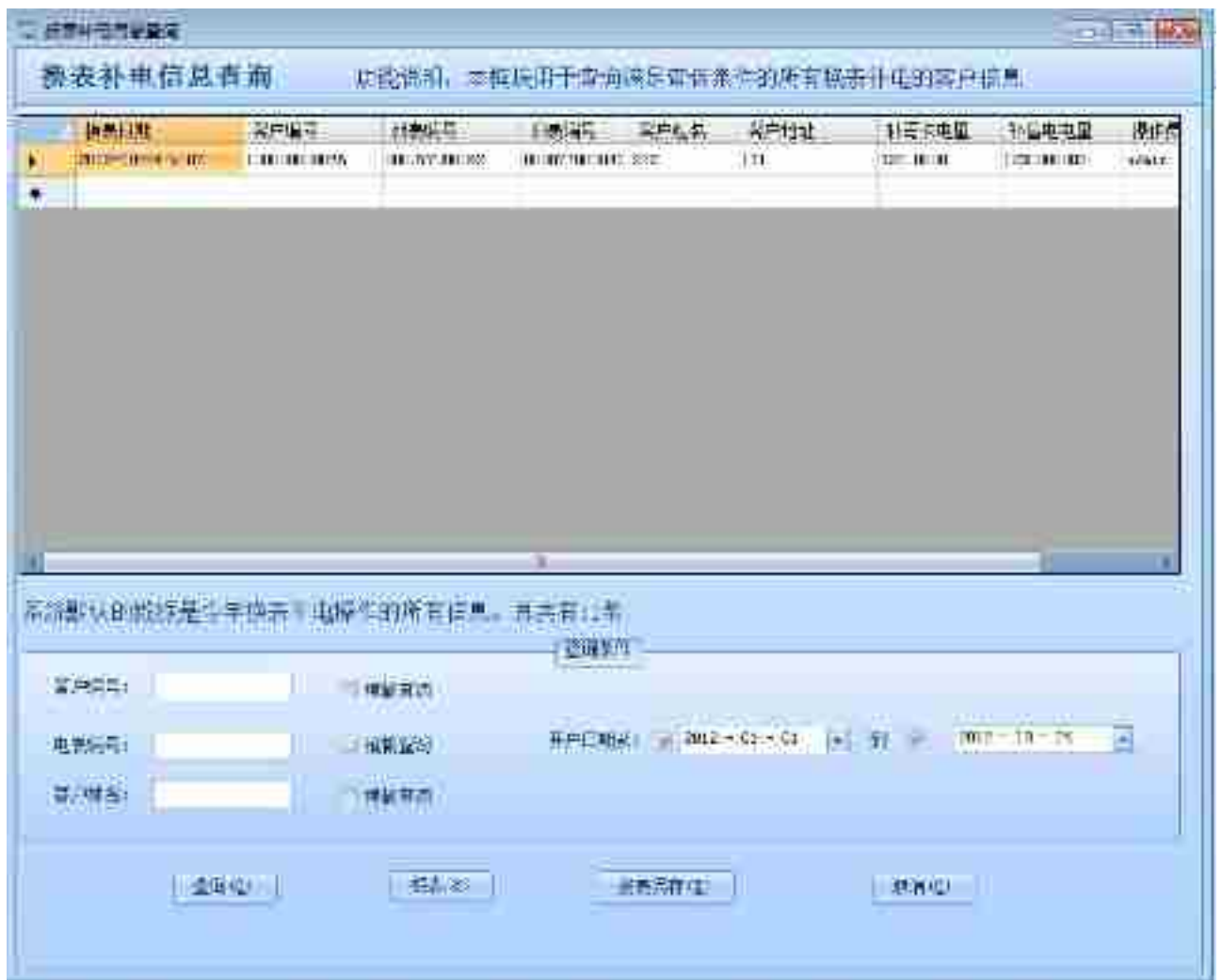
" "

1

2

" " " "





5.6.9

## 5.7

" "

### 5.7.1

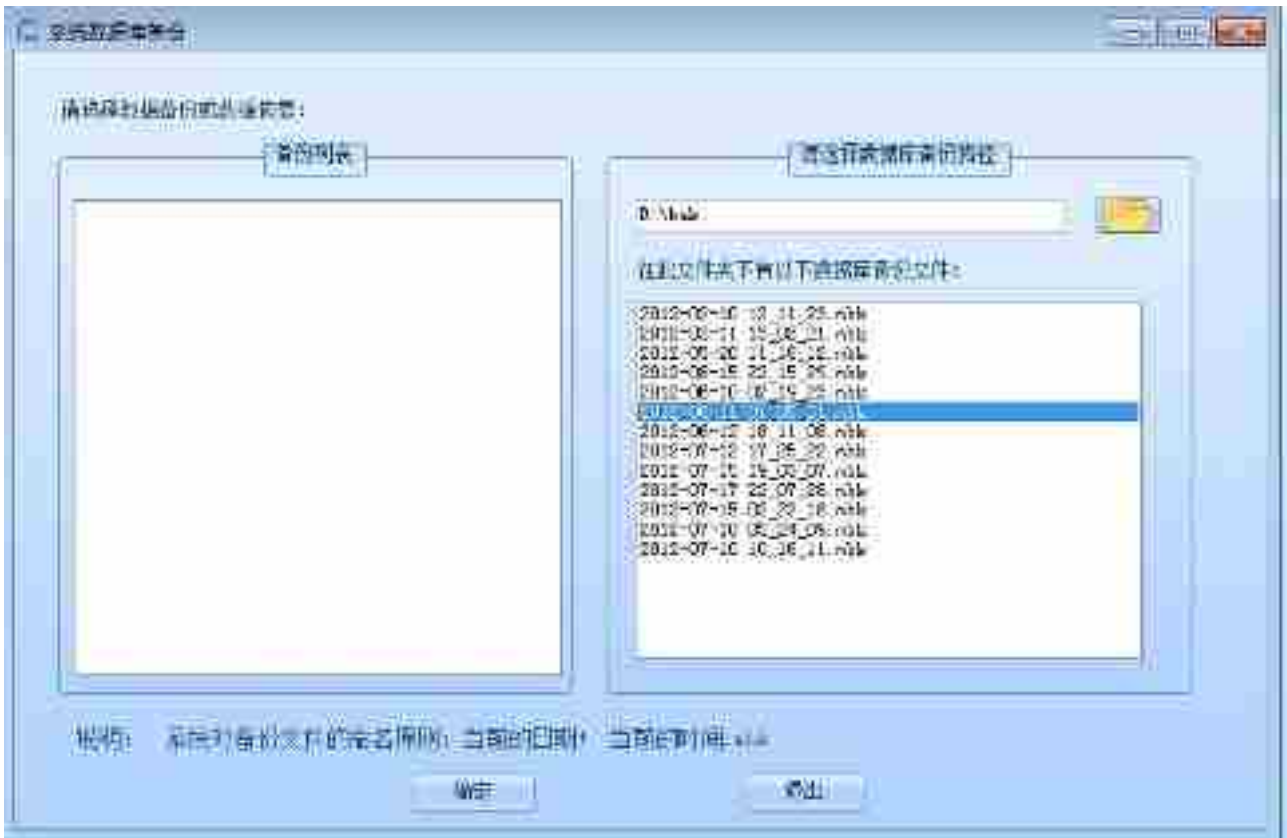


5.7.

### 5.7.1

### 5.7.1

- 1
- 2
- 3



5.7.1.

## 5.7.2

### 5.7.1

1

2

3

4

6.1

,  
,  
,

6.2

.

6.3

.

6.4

, . , . , , . , , .

6.5

,  
,  
IC

6.6

6.7

IC  
IC

6.8